

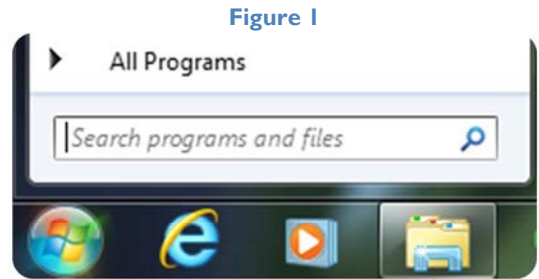
How to connect to:TECTONIC's Terminal Server

To login to the TECTONIC's Terminal Server from your windows desktop please follow the instructions below:

If you are using...

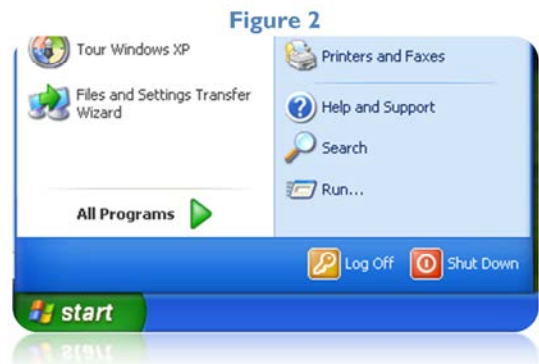
WINDOWS 7 OR VISTA (See Figure 1)

- Go to the "Start" button.
- In the "Search Programs and Files" box type "MSTSC" and then hit the "ENTER" key.

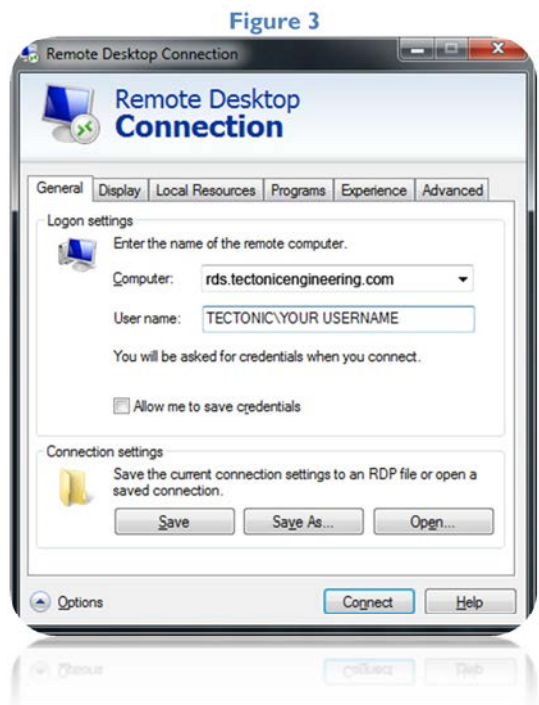


WINDOWS XP (See Figure 2)

- Go to the "Start" button.
- Select "Run".
- In the "Run" window type "MSTSC" and then click on "OK".



This will bring up the Remote Desktop Connection Window (See Figure 3).



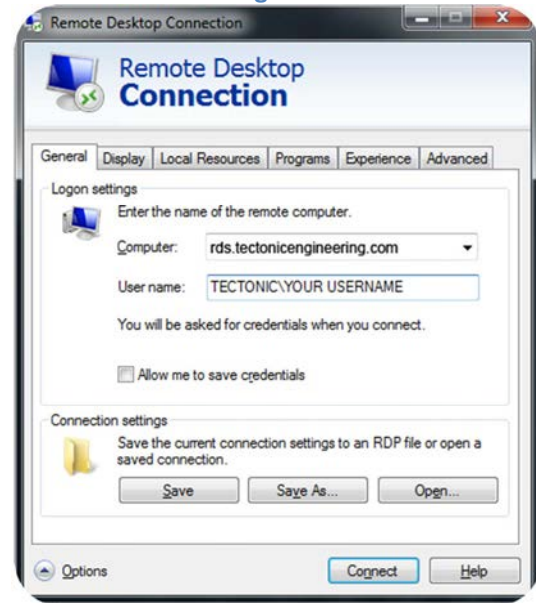
NOTE: If your Remote Desktop Window does not show all the info in figure 3 please click on "Options" (if using Windows XP) or the downwards arrow (if using Windows 7).

How to connect to:TECTONIC's Terminal Server

In the “General” tab type the following information in the listed fields: (See Figure 4)

- Computer: rds.tectonicengineering.com
- User name: TECTONIC\[USERNAME]
(This will be the same as the name you use to login to your computer).

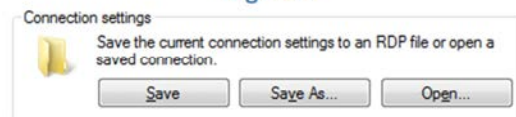
Figure 4



To avoid having to re-type all this information every time you want to login you can:

- Click on the “Save As” button. (See Figure 5)
- Go to your “Desktop” and click on the “Save” button.

Figure 5



Once you have saved your shortcut you can click on the “Connect” button.

(This will start the connection to the Terminal Server)

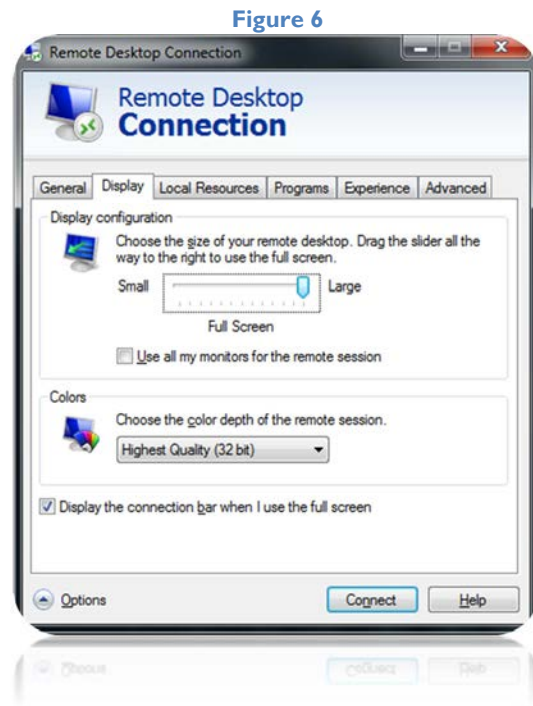
Once connected, the terminal server will prompt you for your password. Type it and you will be logged in.

How to connect to:TECTONIC's Terminal Server

You can further configure your Remote Desktop settings by following these steps:

Display Tab (See Figure 6)

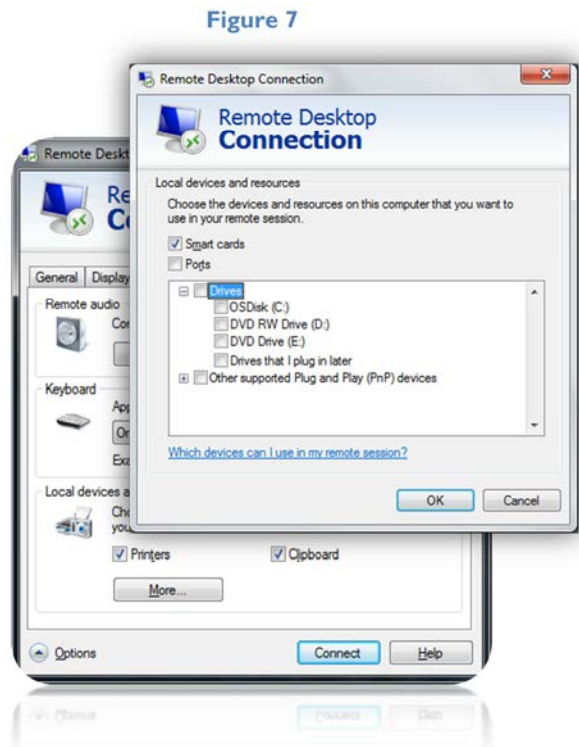
You can use this tab to adjust the size of your remote desktop window and its display quality.



Local Resources Tab (See Figure 7)

This tab lets you access the printers and hard drives in your computer.

(Example: if you're at home and you would like to use your home printer while connected to the Terminal Server, you can do so by selecting the checkbox found next to "Printers" in the "Local Devices and Resources" section. Also, click on the "More..." button to allow access to your local hard drives).

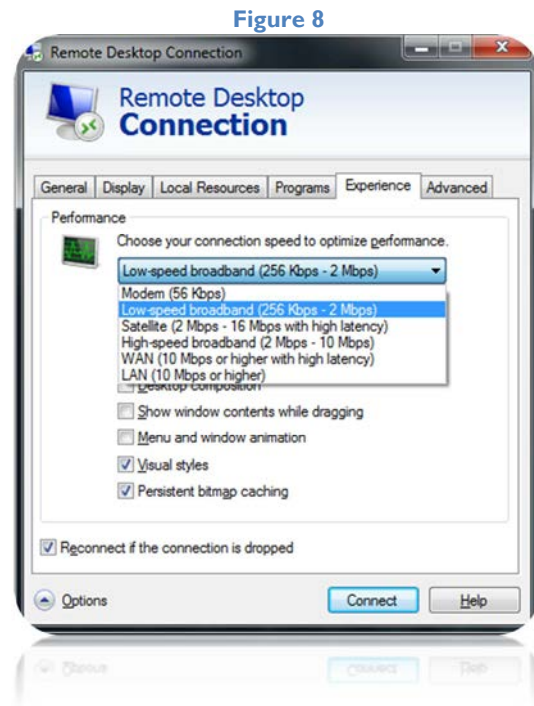


How to connect to:TECTONIC's Terminal Server

Experience Tab (See Figure 8)

You can select the type of connection to use.

(Example: If you would like a faster connection then select "Modem (28.8 Kbps)" from the dropdown menu found under the Performance section. This connection will be faster but at the expense of display quality.)



Please keep in mind that any changes done after you saved the shortcut to your Desktop will not save. If you would like to save your updated settings then please follow these steps:

- Go to the "General" tab.
- Click on the "Save As" button.
- Go to your "Desktop" and click on the "Save" button.
- If you are asked to overwrite than click on "Yes".

Any Questions send an email to info@tectonicengineering.com